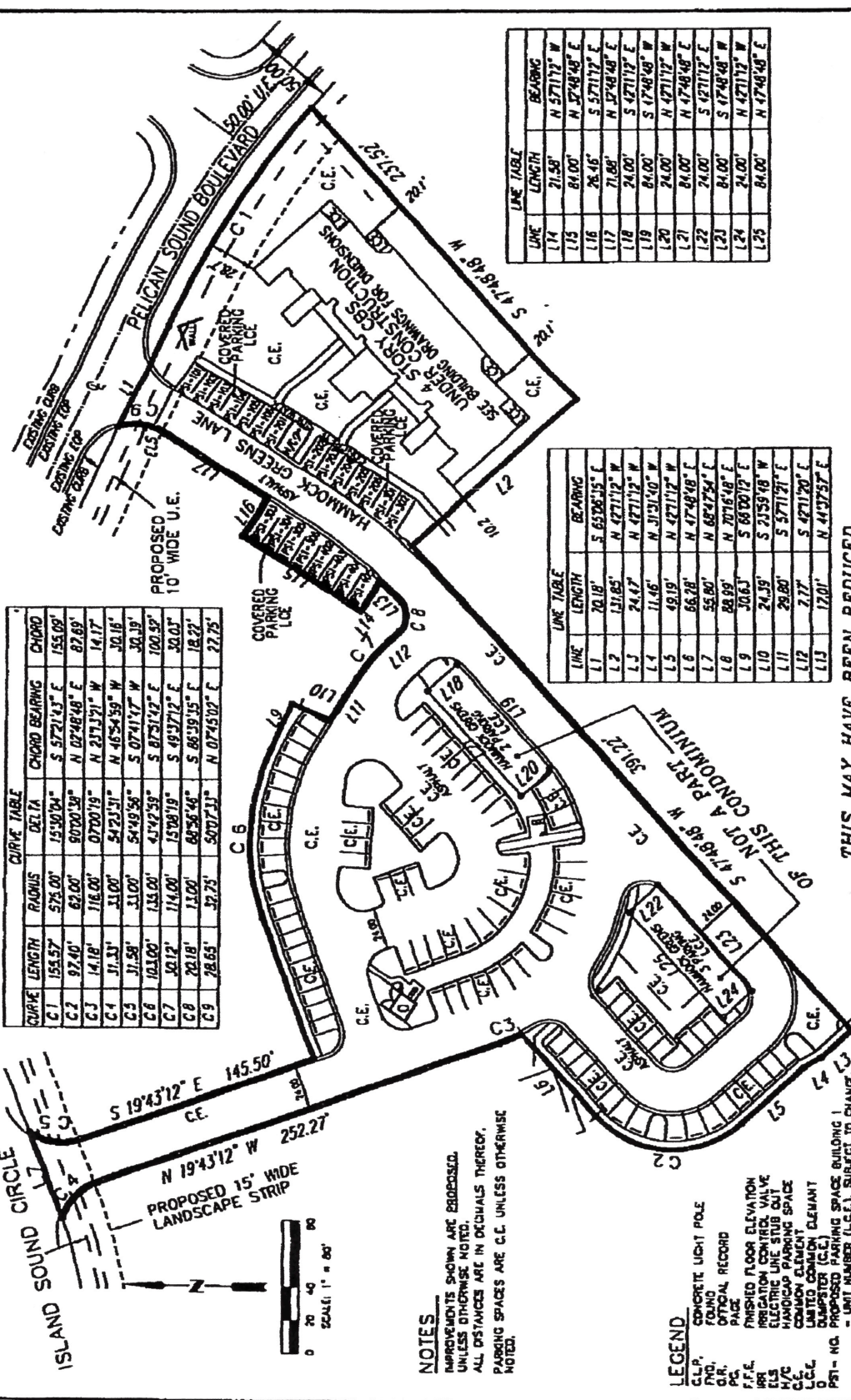


HAMMOCK GREENS AT PELICAN SOUND, A CONDOMINIUM

HP3038 PG 1920



CURVE	LENGTH	PIANUS	DELTA	CHORD BEARING	CHORD
C1	155.57	575.00'	1510.04"	S 57°21'43" E	155.00'
C2	97.40'	62.00'	90700.38"	N 02°48'48" E	87.69'
C3	14.18'	116.00'	07007.19"	N 23°13'21" W	14.17'
C4	31.33'	31.00'	5423.31"	N 46°54'59" W	30.18'
C5	31.58'	31.00'	5449.58"	S 07°41'17" E	30.18'
C6	103.00'	135.00'	43342.58"	S 87°31'42" E	100.39'
C7	30.12'	114.00'	15981.9"	S 49°37'13" E	30.03'
C8	22.18'	14.00'	6936.48"	S 86°39'15" E	18.27'
C9	28.65'	32.25'	5077.11"	N 07°45'02" E	27.75'

LINE	LENGTH	BEARING
L14	21.50'	N 57°17'12" W
L15	84.00'	N 32°48'48" E
L16	28.46'	S 57°17'12" E
L17	71.86'	N 32°48'48" E
L18	24.00'	S 47°11'12" E
L19	84.00'	S 17°48'48" W
L20	24.00'	N 47°11'12" W
L21	84.00'	N 47°48'48" E
L22	24.00'	S 47°11'12" E
L23	84.00'	S 17°48'48" W
L24	24.00'	N 47°11'12" W
L25	84.00'	N 47°48'48" E

LINE	LENGTH	BEARING
L1	20.18'	S 63°06'15" E
L2	31.65'	N 47°11'12" W
L3	24.47'	N 47°11'12" W
L4	11.46'	N 31°31'40" W
L5	49.19'	N 47°11'12" W
L6	66.28'	N 47°48'48" E
L7	55.80'	N 68°27'54" E
L8	68.99'	N 70°16'18" E
L9	30.63'	S 63°06'12" E
L10	24.39'	S 21°59'18" W
L11	29.80'	S 57°11'21" E
L12	2.77'	S 47°11'20" E
L13	17.01'	N 44°37'57" E

THIS MAY HAVE BEEN REDUCED

CONDOMINIUM PLOT PLAN
 HAMMOCK GREENS AT PELICAN SOUND,
 SECTION 32 TOWNSHIP 46 SOUTH, RANGE 45 EAST
 LEE COUNTY, FLORIDA

Q GRADY MINOR AND ASSOCIATES, P.A.
 CIVIL ENGINEERS • LAND SURVEYORS • PLANNERS
 3800 VIA DEL REY
 BONITA SPRINGS, FLORIDA 34134
 PHONE: (941) 947-1344 FAX: (941) 947-0376
 CERTIFICATE OF AUTHORIZATION NUMBER LB 6161

DATE: NOVEMBER, 1998 DRAWING NUMBER: B-1548-2

NOTES
 IMPROVEMENTS SHOWN ARE REDUCED, UNLESS OTHERWISE NOTED.
 ALL DISTANCES ARE IN DECIMALS THEREOF.
 PARKING SPACES ARE C.E. UNLESS OTHERWISE NOTED.

- LEGEND**
- C.L.P. CONCRETE LIGHT POLE
 - D.P. DRAINAGE
 - O.P. OFFICIAL RECORD PAGE
 - F.F.E. FINISHED FLOOR ELEVATION
 - H.R. HORIZONTAL CURVE
 - E.L.S. ELECTRIC LINE STUD CUT
 - H/C HANDICAP PARKING SPACE
 - C.E. COMMON ELEMENT
 - L.C.E. LIMITED COMMON ELEMENT
 - D DUMPSTER (C.E.)
 - PS1-NG - UNIT NUMBER (L.C.E.), SUBJECT TO CHANGE.
 - C.M.P. CORRUGATED METAL PIPE
 - F.M. FLORIDA POWER & LIGHT
 - P.M. WATER MAIN
 - SW WATER VALVE
 - SMH SANITARY MANHOLE
 - WM WOOD MANHOLE
 - P.P. POWER POLE
 - WM WATER METER
 - CB CATCH BASIN
 - CATV CABLE TELEVISION
 - W.S. WATER UNC STUB OUT
 - U.E. UTILITY CASEMENT

DRAWN: S.B.
 JOB CODE: PS-HG1
 SCALE: 1" = 80'